

FORTLEV



THE COMMITMENT
TO TAKE CARE OF OUR
GREATEST ASSET:

WATER

A decorative graphic of a water splash, rendered in a light blue, semi-transparent style, extending from the bottom left of the word 'WATER' across the lower portion of the page.



We started the manufacture of Polyethylene Water Tanks

We achieved ISO 9001 Certification for the manufacturer in Serra (ES). We were also for Anamaco Research Water Tank category.

We opened **two more factories:** one in Araquari (SC) and another in Cajamar (SP).

1989

1998

2000

2002

2004

2005

2008

2010

The Torres Company is officially registered.

The Fiber Water Tanks and the synthetic marble Tanks expand the product line, which are now manufactured in Viana (ES), on 01/10/1989.



We moved the company to the **city of Serra (ES).**

New business unit: we inaugurated an industrial plant for the production and sale of raw materials, in Camaçari, Bahia, Brazil.



We opened a **new factory in Camaçari (BA).**

Expansion: we expanded the SC plant and started the development of Pipes and Fittings line.



We began the production of tubes and fittings in plant BA Pole and we started to deliver all the country.



We began to dream of taking water and solidarity to the most needy region of Brazil: the semi-arid Northeastern. Thus **Agua Viva Institute (IAV) was born**, which mission is to implement education, improve incomes and provide health and sports projects for hundreds of communities.

We grew up even more. We moved from the Cajamar plant (SP) to a **new plant in Itatiba**.

2011

2012

2014

2015

2016

2017

We opened a new factory in Camaçari and reached **two units in Bahia**: one for manufacturing the products and another for composting raw material.

We received the **Anamaco Award**, also for Tubes and Fittings category.

We opened a **new factory** in the city of Cabo de Santo Agostinho (PE).

We implemented SAP: a unique platform for standardization of processes and integration of information. The start of a new time in all Fortlev plants.

We innovated by **launching the New Fortplus Tank**, the youngest of the Reservoir line, which is perfect in size and giant in benefits.



We opened a new **factory** in the city of **Anapolis (GO)**.



2018



2019



In the year we completed **30 years**, an operation of a new factory begins in the city of **Manaus (AM)**.



Launch of **Polyethylene water tank of 30.000 L**, the biggest tank of the market.



2022



2023



Grand opening of the **new Espirito Santo's headquarters**, a modern and technological environment.



OUR MISSION



To be a reference in solutions for **water storage**.

OUR VISION



To be recognized as a Christian company that honors God and as a **leader in water reservoirs**.



OUR VALUES



QUALITY

FROM THE BEGINNING TO THE END

Innovating with technology

without losing one of our greatest characteristics: the tradition of overcome every obstacle.

From the **composition of the 100% virgin raw material**, to the relationship with our customers.

From **training our employees**, through the production lines, to the planning of distribution and sales.

FORTLEV

Certifications

The Habitat's Brazilian Quality and Productivity Program (PBQP-H), of the Ministry of Cities, and all our products meet the specifications of the **Brazilian Association of Technical Standards (ABNT)**.

In addition, since 2002, we have an **international ISO 9001 certification**.





WATER TANKS

LINE

POLYETHYLENE WATER TANK



It is much more **economical in your work**, without giving up security.



Smooth internal surface for **easy cleaning**.



Resistant: produced **seamlessly** with **100% virgin raw material**.



Volumetric panels for application of RTI (Technical Fire Reserve) in models above 7,500L.

Capabilities for all needs

100, 150, 250, 310, 500, 750, 1.000, 1.500, 2.000, 3.000, 5.000, 7.500, 10.000 and 15.000 liters.

FORTLEV



WATER TANKS

LINE

FORTLEV TANK



It is a lot **safer**.



Fast and safe. Screw-on top cover with ¼ turn and full lock.



Includes Adaptor(s) - Flange(s).



Volumetric panels for application of RTI (Technical Fire Reserve) in models above 10,000L.

Capabilities for all needs

310, 500, 1.000, 1.750, 2.500, 5.000, 10.000, 15.000 and 20.000 liters.



WATER TANKS

LINE

ANTIBACTERIAL TANK



Warranty of **10 years**.



Perfect in size and **giant in benefits**.



Innovative design: good for installation in places with reduced heights.



Allows stacking, **facilitating inventory** and its logistics.

Capabilities

500 and 1.000 liters



Excellent seal: threaded top cover with smooth 1/4 turn closure.



Installation Practicality: Adapters (Flanges) installed in the product.



Internal white surface with **Microban® Antibacterial Protection**.



FORTLEV



WATER TANKS

LINE

FORTLEV

FITTINGS FOR TANKS



Exclusive fittings that provide a **safer and more efficient** installation of our tanks line.

Stop Valve:
Much more practicality and security on the premises.

Ballcock Floating Valve:
The Safety your Water Tank needs.

Filter:
Your family deserves this water care.

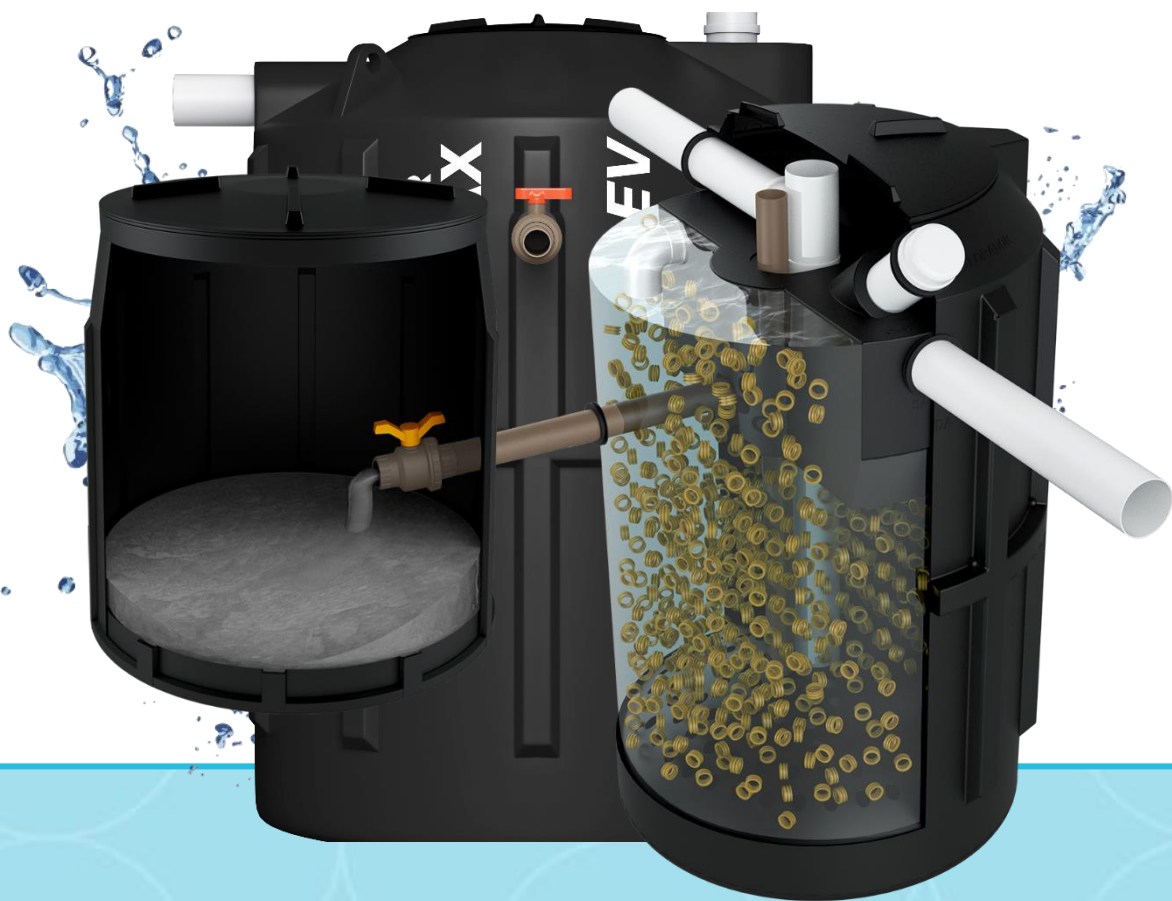
Flange:
The perfect connection between the Pipe and the Water Tank.



ENVIRONMENT

LINE

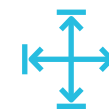
FORTLEV



BIODIGESTER



Greater economy: no septic tank truck required.



Compact product: small area for installation.



Good for **domestic sewage treatment.**



Suitable for a **residence** of up to five people.



No soil contamination.



High efficiency **proven.**



Exclusive **chlorinator** that removes microorganisms of disease-causing

Daily treatment capabilities

700 and 1,500 liters.

ENVIRONMENT

LINE

FORTLEV



SEPTIC TANK



Greater economy: no septic tank truck required



No soil contamination



Good for **domestic sewage treatment.**



Suitable for a **residence** of up to fifteen people.

Daily treatment capabilities

700 e 1.500 liters/day.

ENVIRONMENT

LINE

FORTLEV



DRYING BED



Store **sludge from the domestic wastewater treatment process** of the Biodigester and Septic Tank.



More practical: no masonry work necessary



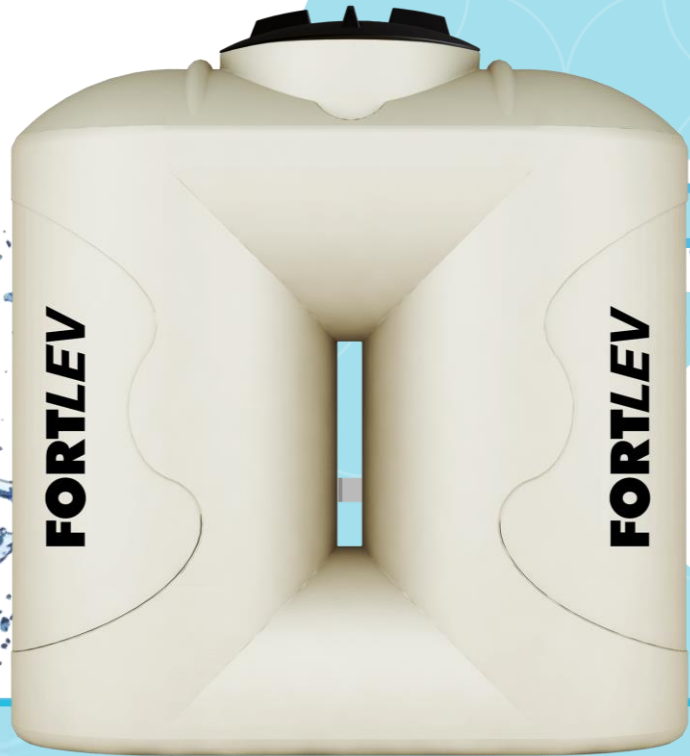
Easy installation: It is a product that only has the body and the cover, making installation way much easier.

Product compatible with:

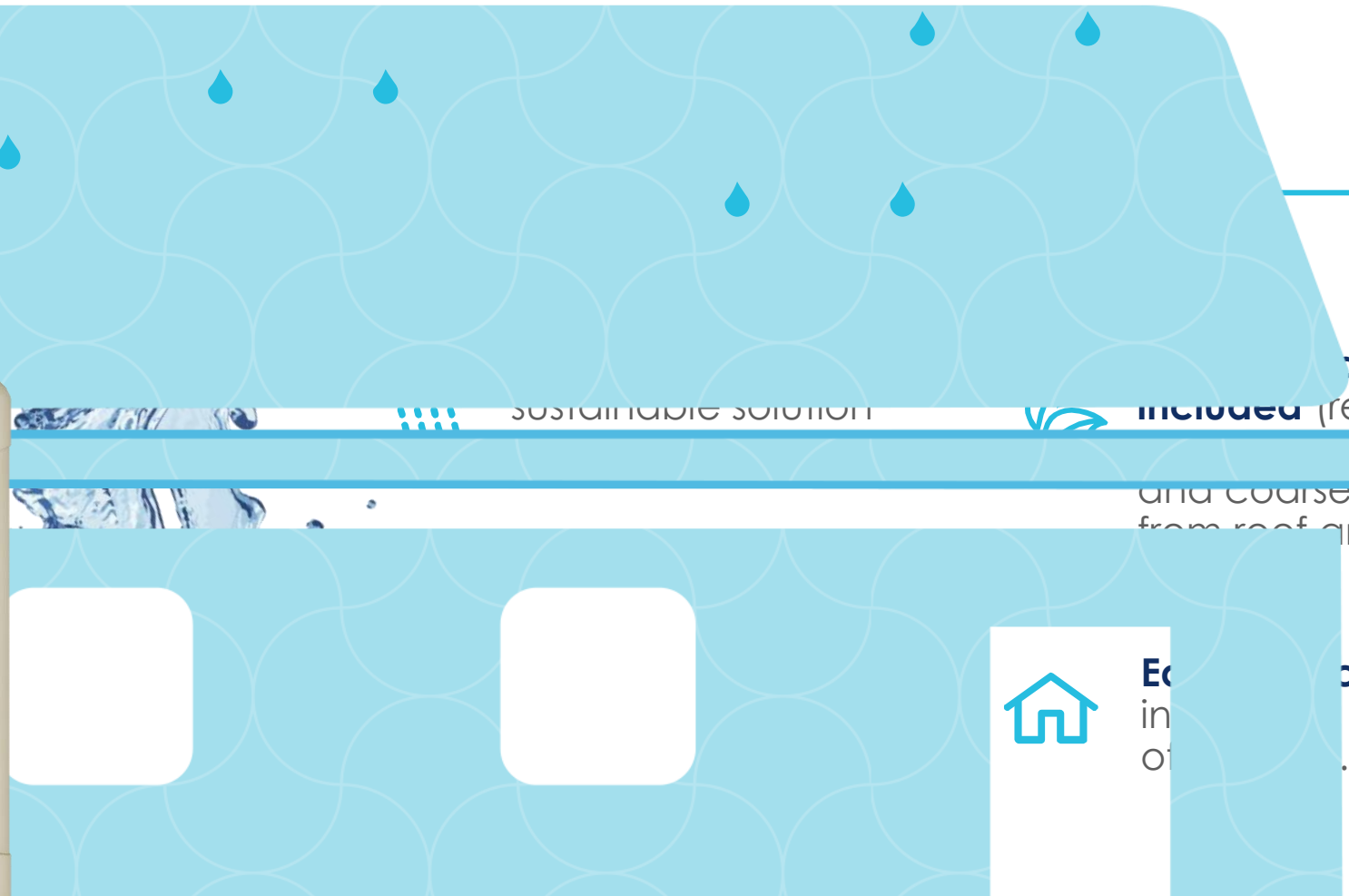
Biodigester and Septic Tank MAX700 and 1,500 liters/day.

ENVIRONMENT LINE

FORTLEV



SLIM TANK



sustainable solution



included

ator
(responsible
aves
and coarse debris
from roof and gutter).



Ec
in
of
cation and
in any type

Capability
600 liters

ENVIRONMENT

LINE

FORTLEV



FORTLEV CISTERN



Practical solution for buried tank (it cannot be buried near of water table).



Storing rainwater or drinking water.



Includes outlet **adapter** (Flange).



Great resistance.



Eas of transport: **side handles** (model 3,000L)



Capabilities

3.000 and 5.000 liters

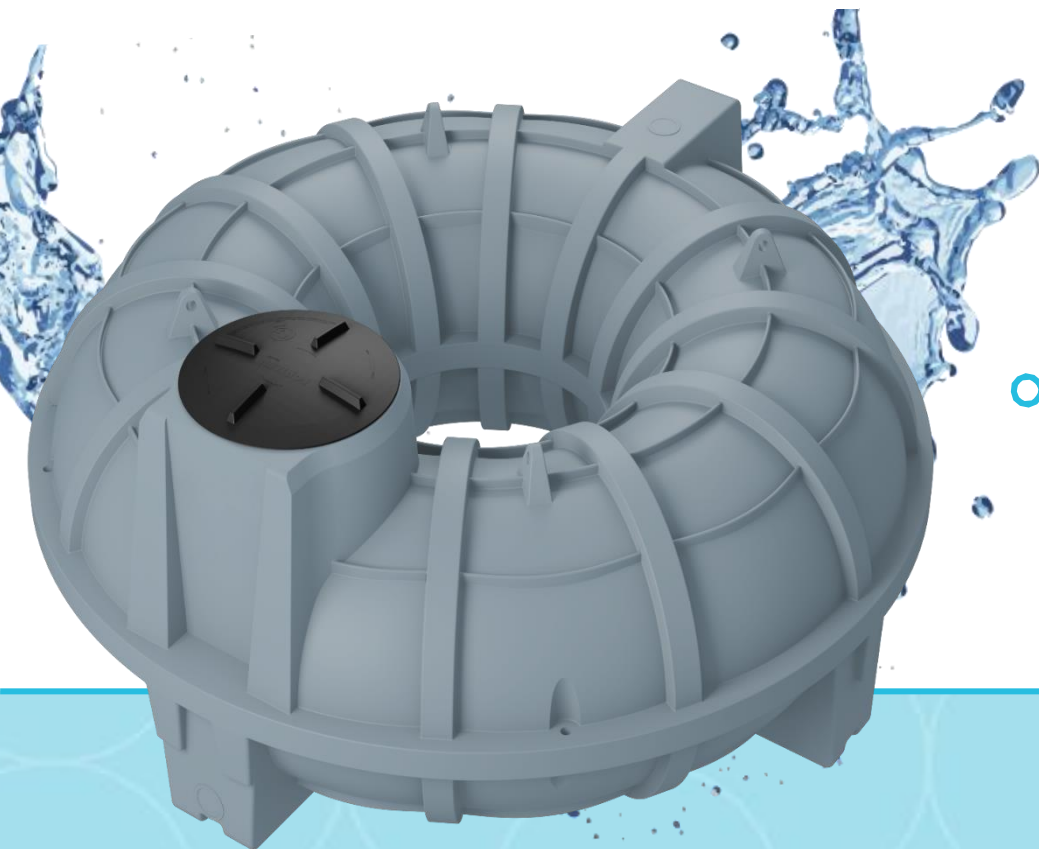
ENVIRONMENT

LINE

FORTLEV



STRUCTURAL CISTERN



Practical, innovative and exclusive solution for buried tank (it can be buried near of water table).



Modern technology for harnessing rainwater and storing drinking water.



It avoids masonry and only needs shallow excavation.



Quick and secure closure. Threaded cover of 60cm in diameter with 1/4 turn and full locking.

Capability

5.000 liters



BUILDING INSTALLATIONS

LINE

ELECTRICITY



Much more security for your home, as the products are manufactured in PVC, with **anti-flame properties** for mechanical protection of building electrical installations.



BUILDING INSTALLATIONS

LINE



COLD WATER



Set of **Fittings and Pipes** that have been carefully **designed** to conduct potable water at room temperature to the points of use.



BUILDING INSTALLATIONS

LINE



SEWAGE



PVC-made, the products are responsible for collecting and conducting waste disposal from sanitary appliances to an appropriate destination, guaranteeing **total safety, quality** and **practicality** for the premises.



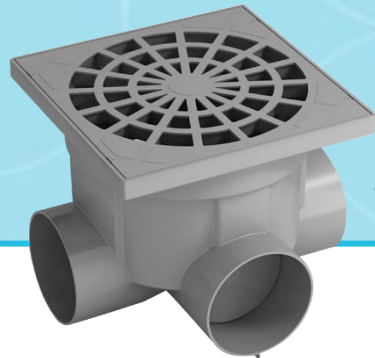
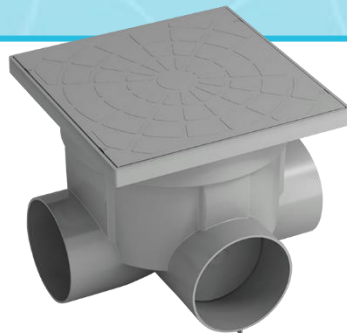
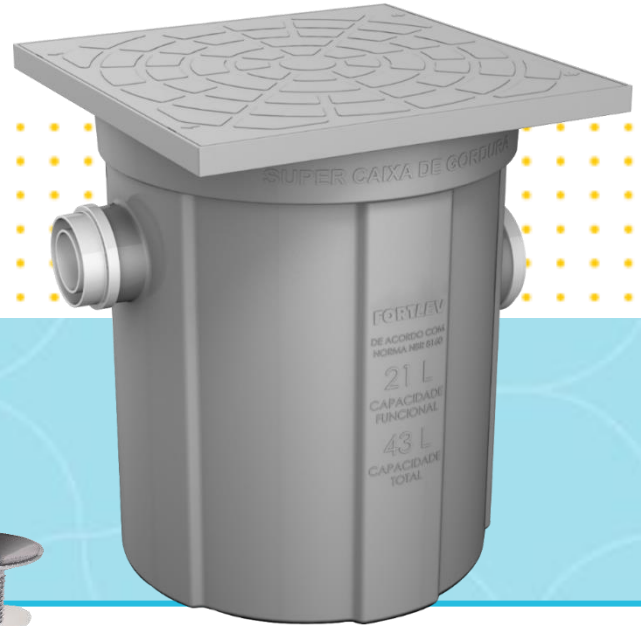
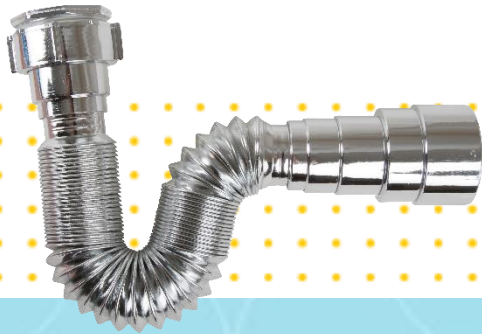
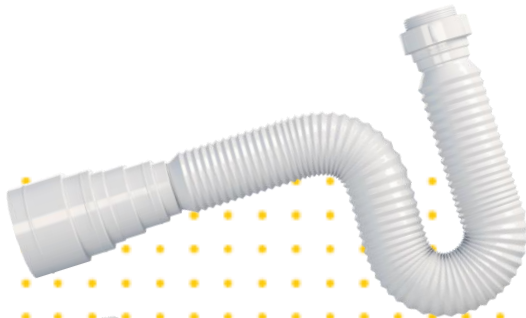
BUILDING INSTALLATIONS

LINE

ACCESSORIES



Much more security for your home. Our building accessories are **practical in installation**, with a **completed sealing** of fittings and pipes.



COVERAGE

LINE



TRANSLUCENT PVC TILES



Much more security for coverage, **it does not spread flames** and does not drip fire.



It is much more **saving** in consumption of electricity, through the use of natural light.



Innovation: first translucent PVC tile in brazilian market.



Strength and durability.

Compatible formats

with tiles of other materials:
Ondalev and Ondafort



Shims: ideal accessories for protection and installation quality

POINTS OF SALE

ACTIONS

FORTLEV takes a support work in the stores and resales through the promotion, training, the development and incentive of products to improve the position of the brand and help the increase of sales.



We have a set of tools to assist the shopkeeper in the sale of products.





Fortlev Group business unit, **dedicated to producing and selling polyethylene compounds for rotomolding.** With high technology and production capacity, it is already the largest manufacturer in South America for this type of product and continuously invests in the development of products and human resources.



Camaçari, Bahia, Brazil



FORTLEV'S STRENGTH



We are a reference

for Reservoirs Line:
79% of resellers deal with our product.

(Source: Anamaco Research 2022)



we are
present in
100%
of Brazilian
cities.



ESPIRITO SANTO PLANT

FORTLEV



LOCATION:
Serra



TOTAL AREA:
83.568 m²



PRODUCTION: Water tanks, Corrugated Conduits, Pipes and Distribution Center (CD) of Fittings.



GOIAS PLANT

FORTLEV



LOCATION:
Anapolis



TOTAL AREA:
52.000 m²



PRODUCTION: Water tanks.



BAHIA PLASTIC PLANT



LOCATION:
Camaçari



TOTAL AREA:
135.000 m²



PRODUCTION: Water tanks, Corrugated Conduits, Pipes and Fittings.



SAO PAULO PLANT



LOCATION:
Itatiba



TOTAL AREA:
77.075 m²



PRODUCTION: Corrugated Conduits
and Water Tanks.



BAHIA COMPOUND PLANT



LOCATION:
Camaçari



TOTAL AREA:
15.000 m²



PRODUCTION: Masterbatch compound.



PERNAMBUCO PLANT

FORTLEV



LOCATION:
Cabo de Santo Agostinho



TOTAL AREA:
74.000 m²



PRODUCTION: Water tanks.



AMAZONAS PLANT



LOCATION:
Manaus



TOTAL AREA:
14.000 m²



PRODUCTION: Masterbatch compound and water tanks.



SANTA CATARINA PLANT

FORTLEV



LOCATION:
Araquari



TOTAL AREA:
200.759 m²



PRODUCTION: Water tanks.
Corrugated Conduits, Pipes and
Fittings.





I N S T I T U T O
AGUAVIVA

The project started in 2015 with the dream of **acting in the semiarid northeastern of Brazil.**



PROJECTS
PILLARS OF IAV



SPORTS SCHOOL

It reinforces the importance of sport in the **rescue and reintegration of children and adolescents** in social risk. Football, Volleyball and Basketball Schools were created.

Attendance at 2023
10,322 Students

HEALTH PROMOTION

In order to **take care of families' health in hinterlands**, the IAV maintains a Mobile Medical and Dental Clinic that circulates daily by dozens of communities, with most part of the route in regions with difficult access.

Attendance at 2023:
31,495 People served

COMPLEMENTARY EDUCATION

Activities carried out in a **complementary way to the school**, ranging from music workshops to reinforcement in literacy subjects.

Attendance at 2023:
7,042 Students

IMPROVE INCOMES

Creation of **initiatives that add income to the families of the hinterlands**: a factory of wooden toys, a pole of confection, a factory of slippers, technical courses of craftsmanship etc.

Attendance at 2023:
6,603 Beneficiaries



FORTLEV

